

Access Doors



Complementary Building Products



Right to site.

Nystrom Access Doors & Panels are manufactured to solve a myriad of access needs. Custom sizing, materials, and custom colors are available to ensure that whatever you need for your project, we've got you covered.

Shipped direct from our central manufacturing facility or from one of our strategically located stocking locations, Nystrom delivers the doors you need ... Right to Site.

N-Series: Non-Rated Flush



R-Series: Non-Rated Recessed



I-Series: Fire-Rated Insulated



U-Series: Fire-Rated Non-Insulated



S-Series: Fire-Rated Insulated Security



M-Series: Non-Rated Flush Security



HS-Series: Non-Rated High-Security



TS-Series: Non-Rated Top-Security



RU-Series: Fire-Rated Recessed Tiled



XT-Series: Non-Rated Exterior



FRD-Series: Fire-Rated Oversized



LW-Series: Non-Rated Lightweight



FRU-Series: Fire-Rated Upward



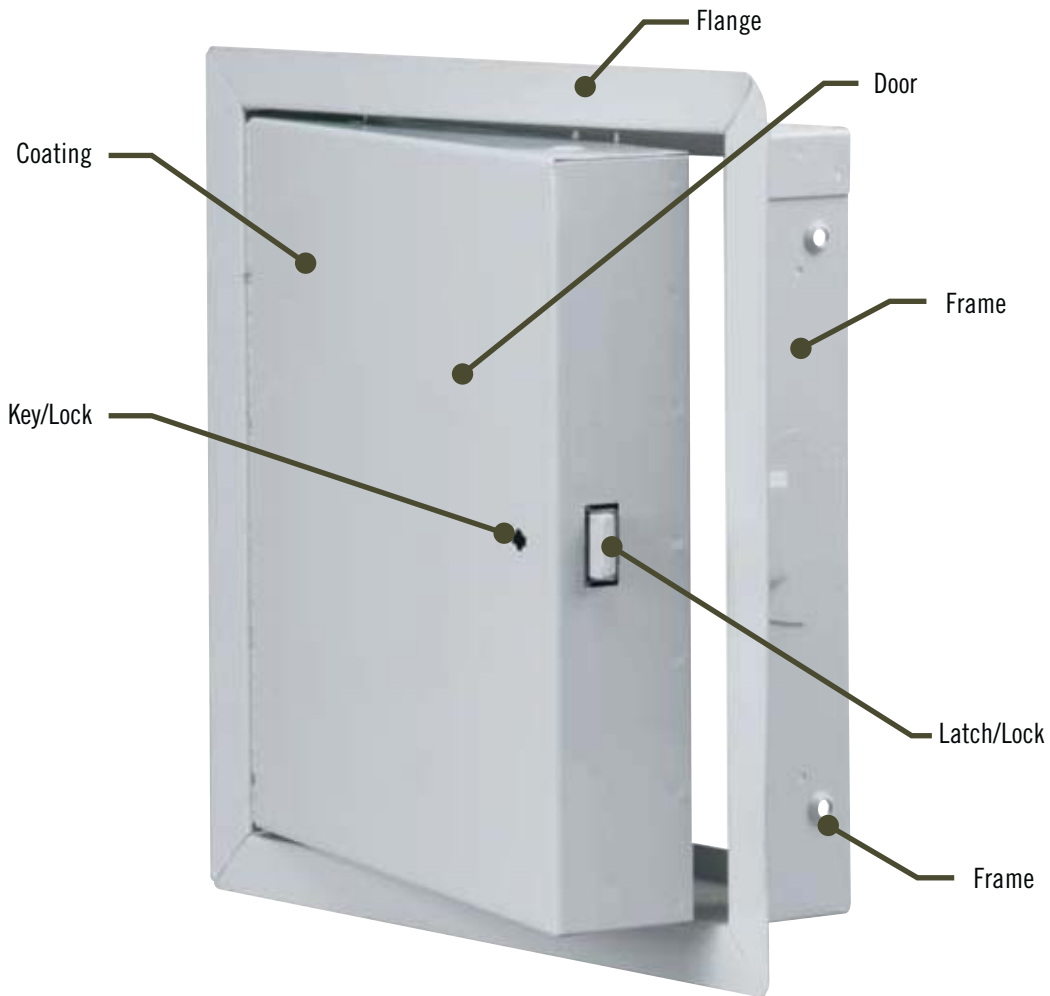
DTK-Series: Non-Rated Draft Stop



PL-Series: Non-Rated Plastic



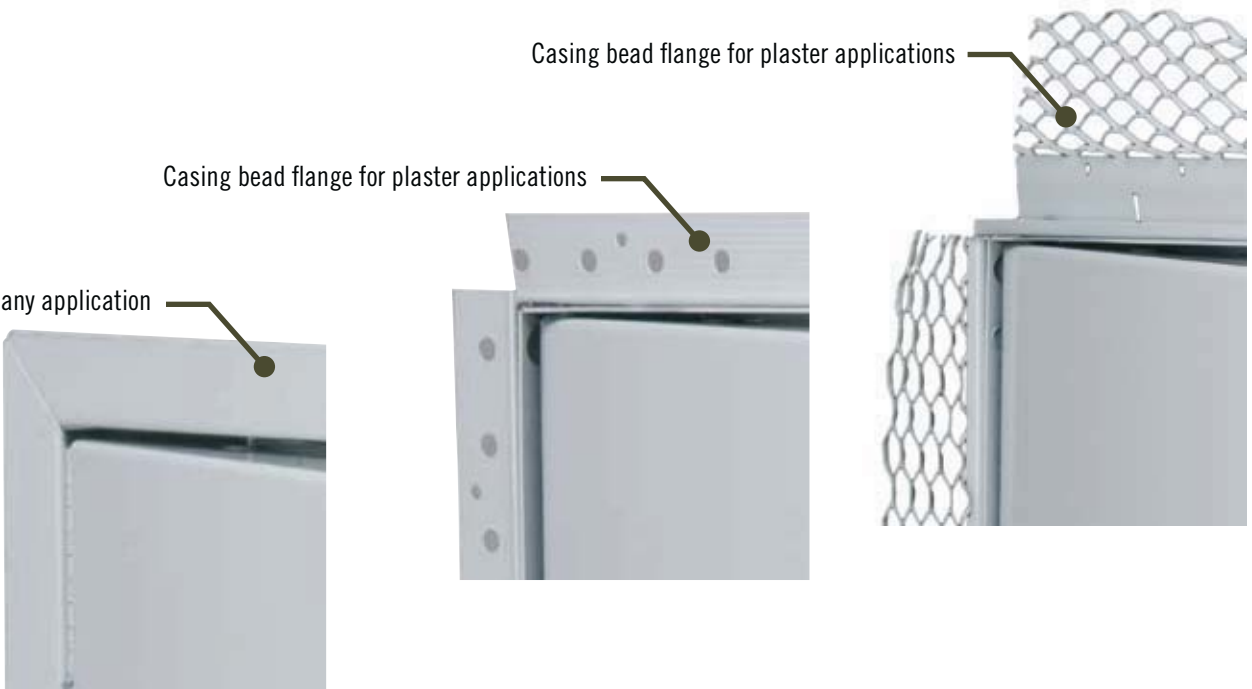
Feature Specifications



Casing bead flange for plaster applications

Casing bead flange for plaster applications

All-Purpose flange for any application



NT: All Purpose



Shown with optional 1.125" mortise preparation and colored powder coat.

NW: Tape In



NP: Plaster



Nystrom N Series non-rated flush access doors have a minimal sight line for a concealed appearance.

NT non-rated access doors are designed with a one inch exposed flange for flush installation in any vertical or horizontal surface.

NW non-rated access doors are manufactured with a tape in bead flange for a concealed appearance in vertical or horizontal drywall surfaces, leaving only the door exposed.

NP non-rated access doors are manufactured with plaster casing bead frames for a concealed appearance in vertical or horizontal plaster surfaces, leaving only the door exposed.

- Door: 14-gauge cold rolled steel
- Frame: 16-gauge cold rolled steel
- NT: 1" flange for all surfaces
- NW: 22-gauge galvanized drywall corner bead
- NP: 22-gauge galvanized plaster casing bead
- Hinge: NT: Concealed spring pin*
- Hinge: NW: Concealed continuous piano
- Hinge: NP: Concealed continuous piano
- Latch: Screwdriver cam latch
- Finish: Paintable powder coat

Rough opening is door size + 1/4".

*Flush continuous piano hinges are standard on all stainless steel panels and those exceeding 24" width and/or 36" length dimension.

N - Series Order Guide

Select options to configure model number. The size chart represents common sizes, but we offer a wide range of additional standard sizes and custom sizes upon request. Contact Nystrom for additional choices.

FLANGE	
T	1" Flange
W	Drywall bead
P	Plaster casing

LATCH	
C	Screwdriver cam latch
L	Key operated cam latch
M	Mortise lock prep

SERIES	FLANGE	LATCH	WIDTH	X	HEIGHT	OPTIONS
N						

EXAMPLES OF COMMON WIDTH" X LENGTH"					
06 x 06	12 x 18	16 x 20	22 x 22	24 x 36	32 x 32
08 x 08	12 x 24	18 x 18	22 x 30	24 x 48	36 x 36
10 x 10	14 x 14	18 x 24	24 x 24	30 x 30	36 x 48
12 x 12	16 x 16	20 x 30	24 x 30	30 x 36	

All access panels are hinged on the height dimension.

OPTIONS	
B	Bonderized/galvanized steel
G	Gasketing
M	Masonry anchors
S	T304 Stainless steel

Multiple options may be chosen.

RA: No Flange



RP: Plaster



RW: Tape In



Nystrom R Series recessed access doors are designed with a 5/8" depth pan to receive infill material to match surrounding surface.

RW recessed access doors are manufactured with a tape in bead flange for a concealed appearance in vertical or horizontal drywall surfaces and designed with a 5/8" depth pan to receive a layer of drywall for a concealed appearance.

RP recessed access doors are manufactured with plaster casing bead frames for a concealed appearance in vertical or horizontal plaster surfaces and designed with a 5/8" depth pan to receive plaster for a concealed appearance.

RA recessed access door is designed with a 5/8" depth pan to receive acoustical tile.

- Door: 16-gauge cold rolled steel
- Frame: 16-gauge cold rolled steel
- RW: 22-gauge galv. drywall corner bead
- RP: 22-gauge galv. plaster casing bead
- RA: No frame required - not recommended for grid ceilings
- Hinge: Concealed pivoting rod
- Latch: Screwdriver cam latch
- Pan Depth: 5/8"
- Finish: Paintable powder coat
- Insulation: None

Rough opening is door size + 1/4".

R - Series Order Guide

Select options to configure model number. The size chart represents common sizes, but we offer a wide range of additional standard sizes and custom sizes upon request. Contact Nystrom for additional choices.

FLANGE	
A	No flange
W	Drywall bead
P	Plaster casing

LATCH	
C	Screwdriver cam latch
L	Key operated cam latch
M	Mortise lock prep

SERIES	FLANGE	LATCH	WIDTH	x	HEIGHT	OPTIONS
R						

EXAMPLES OF COMMON WIDTH" X LENGTH"			
08 x 08	16 x 16	20 x 30	24 x 30
12 x 12	18 x 18	24 x 24	24 x 36

All access panels are hinged on the height dimension.

OPTIONS	
B	Bonderized/galvanized steel
G	Gasketing
S	T304 Stainless steel
C	Cabinet hinge (vertical surfaces only)

Multiple options may be chosen.

Insulated • Fire-Rated for Vertical or Horizontal Surfaces

IT: All Purpose

FIRE RATED



Shown with knurled knob/key operated latch bolt



IW: Tape In

FIRE RATED



IP: Plaster

FIRE RATED



Nystrom I Series insulated, fire rated access doors provide access through openings in fire rated vertical or horizontal surfaces.

UL listed "B" label for 1-1/2 hours in vertical surfaces (maximum temperature rise to 250°F in 30 min.).

Warnock-Hersey listed for 3 hours in horizontal surfaces.

IT fire-rated access doors are designed with a one inch exposed flange for flush installation in any vertical or horizontal surface.

IW fire-rated access doors are manufactured with a tape in bead flange for a concealed appearance in vertical or horizontal drywall surfaces.

IP fire-rated access doors are manufactured with plaster casing bead frames for a concealed appearance in vertical or horizontal plaster surfaces.

Door: 20-gauge cold rolled steel

Frame: 16-gauge cold rolled steel

IT: 1" flange for all surfaces

IW: 22-gauge galv. drywall corner bead

IP: 22-gauge galv. plaster casing bead

Hinge: IT: Flush continuous piano

IW: Concealed pin

IP: Concealed pin

Latch: Knurled knob/key operated latch bolt

Finish: Paintable powder coat

Insulation: 2" thick fire rated mineral fiber

Fire rated smoke barrier access doors are available with a certified smoke leakage rating (style: ITK-SFB).

Rough opening is door size + 1/4".

Interior latch release mechanism is standard.

I - Series Order Guide

Select options to configure model number. The size chart represents common sizes, but we offer a wide range of additional standard sizes and custom sizes upon request. Contact Nystrom for additional choices.

FLANGE	
T	1" Flange
W	Drywall bead
P	Plaster casing

LATCH	
K	Knurled knob/key operated latch bolt
M	Mortise lock prep

SERIES	FLANGE	LATCH	WIDTH	X	HEIGHT	OPTIONS
I						

EXAMPLES OF COMMON WIDTH" X LENGTH"					
08 x 08	12 x 24	18 x 24	22 x 36	24 x 48*	36 x 36*
10 x 10	14 x 14	20 x 30	24 x 24	30 x 30*	36 x 48*
12 x 12	16 x 16	22 x 22	24 x 30	32 x 32*	48 x 48*
12 x 18	18 x 18	22 x 30	24 x 36		

All access panels are hinged on the height dimension.
*Contact Nystrom for fire-rating details in horizontal surfaces.

OPTIONS	
B	Bonderized/galvanized steel
G	Gasketing
M	Masonry anchors
S	T304 Stainless steel

Multiple options may be chosen.

UW: Tape In

FIRE RATED



UP: Plaster

FIRE RATED



UT: All Purpose

FIRE RATED



Shown with knurled knob/key operated latch bolt



Nystrom U Series uninsulated, fire rated access doors provide access through openings in fire rated vertical surfaces and have a minimal sight line for a concealed appearance.

UL listed "B" label for 1-1/2 hours in vertical surfaces.

UT fire rated access doors provide access through fire rated vertical surfaces, in any material including drywall, plaster, and CMU.

UW fire rated access doors are manufactured with a tape in bead flange for a concealed appearance in vertical drywall surfaces.

UP fire rated access doors are manufactured with plaster casing bead frames for a concealed appearance in vertical plaster surfaces.

- Door: 14-gauge cold rolled steel
- Frame: 16-gauge cold rolled steel
- UT: 1" flange for all surfaces
- UW: 22-gauge galv. drywall corner bead
- UP: 22-gauge galv. plaster casing bead
- Hinge: UT: Flush continuous piano
UW: Concealed pin
UP: Concealed pin
- Latch: Knurled knob/key operated latch bolt
- Finish: Paintable powder coat
- Insulation: None

Rough opening is door size + 1/4".

U - Series Order Guide

Select options to configure model number. The size chart represents common sizes, but we offer a wide range of additional standard sizes and custom sizes upon request. Contact Nystrom for additional choices.

FLANGE	
T	1" Flange
W	Drywall bead
P	Plaster casing

LATCH	
K	Knurled knob/key operated latch bolt
M	Mortise lock prep

SERIES	FLANGE	LATCH	WIDTH	X	HEIGHT	OPTIONS
U						

EXAMPLES OF COMMON WIDTH" X LENGTH"					
08 x 08	12 x 24	18 x 24	22 x 36	24 x 36	32 x 32
10 x 10	14 x 14	20 x 30	24 x 24	24 x 48	36 x 36
12 x 12	16 x 16	22 x 22	24 x 30	30 x 30	36 x 48
12 x 18	18 x 18	22 x 30			

All access panels are hinged on the height dimension.

OPTIONS	
B	Bonderized/galvanized steel
G	Gasketing
M	Masonry anchors
S	T304 Stainless steel

Multiple options may be chosen.

ST: All Purpose

SW: Tape In

SP: Plaster

FIRE RATED



Shown with knurled knob/key operated latch bolt



FIRE RATED



FIRE RATED



Nystrom S Series insulated, fire rated, security access doors are manufactured with heavy-duty materials to prevent unwanted access through openings in fire rated vertical surfaces.

UL listed "B" label for 1-1/2 hours in vertical surfaces (maximum temperature rise to 250°F in 30 min.).

ST security fire rated access doors are manufactured with a one inch flange for installation in any vertical surface.

SW security fire rated access doors are manufactured with a tape in bead flange for a concealed appearance in vertical drywall.

SP security fire rated access doors are manufactured with a plaster casing bead flange for a concealed appearance on vertical plaster.

Door: 14-gauge cold rolled steel

Frame: 16-gauge cold rolled steel

ST: 1" flange for all surfaces

SW: 22-gauge galv. drywall corner bead

SP: 22-gauge galv. plaster casing bead

Hinge: ST: Flush continuous piano

SW: Concealed pin

SP: Concealed pin

Latch: Mortise preparation for 1-1/8" mortise cylinder

Finish: Paintable powder coat

Insulation: 2" thick fire rated mineral fiber

Rough opening is door size + 1/4".

S - Series Order Guide

Select options to configure model number. The size chart represents common sizes, but we offer a wide range of additional standard sizes and custom sizes upon request. Contact Nystrom for additional choices.

FLANGE	
T	1" Flange
W	Drywall bead
P	Plaster casing

LATCH	
K	Knurled knob/key operated latch bolt
M	Mortise lock prep

SERIES	FLANGE	LATCH	WIDTH	X	HEIGHT	OPTIONS
S						

EXAMPLES OF COMMON WIDTH" X LENGTH"			
12 x 12	18 x 18	24 x 24	24 x 40
16 x 16	22 x 30	24 x 36	24 x 48

All access panels are hinged on the height dimension.

OPTIONS	
B	Bonderized/galvanized steel
G	Gasketing
M	Masonry anchors
S	T304 Stainless steel

Multiple options may be chosen.

MW: Tape In



MP: Plaster



MT: All Purpose



Shown with 1.125" mortise cylinder

Nystrom M Series non-rated, flush, security access doors provide access through vertical or horizontal surfaces and have a minimal sight line for a concealed appearance.

MT Series medium security access panels are manufactured with heavy-duty materials to prevent unwanted access, and a one inch flange for installation in any vertical or horizontal surface.

MW Series medium security access panels are manufactured with heavy-duty materials to prevent unwanted access, and a drywall bead frame for a concealed appearance on vertical or horizontal drywall surfaces.

MP Series medium security access panels are manufactured with heavy-duty materials to prevent unwanted access, and a plaster casing bead frame for a concealed appearance in vertical or horizontal plaster surfaces.

- Door: 12-gauge cold rolled steel
- Frame: 12-gauge cold rolled steel
- MT: 1" flange for all surfaces
- MW: 22-gauge galv. drywall corner bead
- MP: 22-gauge galv. plaster casing bead
- Hinge: Concealed continuous piano
- Latch: Pinned allen head cam latch(es)
- Finish: Paintable powder coat

Rough opening is door size + 1/4".

M - Series Order Guide

Select options to configure model number. The size chart represents common sizes, but we offer a wide range of additional standard sizes and custom sizes upon request. Contact Nystrom for additional choices.

FLANGE	
T	1" Flange
W	Drywall bead
P	Plaster casing

LATCH	
M	Mortise lock prep
P	Pinned allen head cam latch(es)
S	Pinned allen head security screw(s)

SERIES	FLANGE	LATCH	WIDTH	X	HEIGHT	OPTIONS
M						

EXAMPLES OF COMMON WIDTH" X LENGTH"					
08 x 08	12 x 24	18 x 18	22 x 30	24 x 48	32 x 32
10 x 10	14 x 14	18 x 24	24 x 24	30 x 30	36 x 36
12 x 12	16 x 16	20 x 30	24 x 30	30 x 36	36 x 48
12 x 18	16 x 20	22 x 22	24 x 36		

All access panels are hinged on the height dimension.

OPTIONS	
B	Bonderized/galvanized steel
G	Gasketing
M	Masonry anchors
S	T304 Stainless steel

Multiple options may be chosen.

HS: All Purpose



Nystrom HS flush, security access doors control access through vertical or horizontal surfaces and are manufactured with detention grade materials.

- Door: 10-ga. cold rolled steel
- Frame: 2" x 2" x 3/16" steel angle
- Hinge: Surface-mounted heavy-duty butt hinges
- Latch: Security screws
- Finish: Paintable powder coat

Rough opening is door size + 3/4".

HS - Series Order Guide

Select options to configure model number. The size chart represents common sizes, but we offer a wide range of additional standard sizes and custom sizes upon request. Contact Nystrom for additional choices.

LATCH	
D	Detention lock prep
M	Mortise lock prep
S	Security screws

SERIES	LATCH	WIDTH	X	HEIGHT	OPTIONS
HS					

EXAMPLES OF COMMON WIDTH" X LENGTH"				
12 x 12	18 x 18	24 x 24	24 x 40*	
16 x 16	22 x 30	24 x 36*	24 x 48*	

All access panels are hinged on the height dimension.
*Recommended for vertical surfaces only.

OPTIONS	
G	Gasketing
M	Masonry anchors
S	T304 Stainless steel

Multiple options may be chosen.

Nystrom TS flush, security access doors control access through vertical or horizontal surfaces and are manufactured with detention grade materials.

In addition, our formed door creates a return flange on the perimeter of the door to ensure flatness of material, and tamperproof edges (excellent for plumbing chases).

- Door: 7-ga. hot rolled steel
- Frame: 2" x 3" x 3/16" steel angle
- Hinge: Surface-mounted heavy-duty butt hinges
- Latch: Detention lock preparation
- Finish: Paintable powder coat

Rough opening is door size + 1/4".

TS: All Purpose



TS - Series Order Guide

Select options to configure model number. The size chart represents common sizes, but we offer a wide range of additional standard sizes and custom sizes upon request. Contact Nystrom for additional choices.

LATCH	
D	Detention lock prep
M	Mortise lock prep

SERIES	LATCH	WIDTH	X	HEIGHT	OPTIONS
TS					

EXAMPLES OF COMMON WIDTH" X LENGTH"				
12 x 12	18 x 18	24 x 24*	24 x 40*	
16 x 16	22 x 30*	24 x 36*	24 x 48*	

All access panels are hinged on the height dimension.
*Recommended for vertical surfaces only.

OPTIONS	
G	Gasketing
M	Masonry anchors
S	T304 Stainless steel

Multiple options may be chosen.

RU: Concealed Panel for Tile

FIRE RATED



Nystrom RU Series uninsulated access doors provide access through vertical surfaces in ceramic tile applications. When installed, the door and frame are completely concealed, providing an aesthetically pleasing appearance.

RU access doors can be mounted in any material including drywall, plaster, and CMU.

Nystrom RU Series access door is designed to accept a tile up to 5/8" depth, including mastic, for a concealed appearance.

UL listed "B" label for 1-1/2 hrs.

- Door: 14-ga bonderized/galvanized steel
- Frame: 16-ga bonderized/galvanized steel
- Hinge: Cabinet type
- Latch: Flush key operated lock
- Finish: None

Rough opening is door size + 1/4".

Interior latch release mechanism is standard.

RU - Series Order Guide

Select options to configure model number. The size chart represents common sizes, but we offer a wide range of additional standard sizes and custom sizes upon request. Contact Nystrom for additional choices.

FLANGE

- T** 1" Flange
- W** Drywall bead

LATCH

- K** Knurled knob/key operated latch bolt
- M** Mortise lock prep

SERIES **RU** **FLANGE** **LATCH** **WIDTH** x **HEIGHT** **OPTIONS**

EXAMPLES OF COMMON WIDTH" X LENGTH"

08 x 08	16 x 16	20 x 30
12 x 12	18 x 18	24 x 24*

All access panels are hinged on the height dimension.
*Maximum size available.

OPTIONS

- B** Bonderized/galvanized
- G** Gasketing
- S** T304 Stainless steel

Multiple options may be chosen.

XT: Exterior



Shown with optional locking handle
(Model XT2424)



Shown with optional 1/4 turn latch
(Model XTT1212)



Nystrom X Series exterior access panels provide efficient and quick access in exterior applications, while keeping even the harshest of environments out of the building. Dual acting non-locking handles make it possible to open this door from the inside or outside. An exterior lockable handle is also available.

- Door: 20-ga galvanized steel
- Frame: .080" 6063-T5 extruded aluminum
- Hinge: Stainless steel continuous piano
- Latch: Dual acting, chrome-plated handle(s)
- Finish: Mill (Paint grip finish on door face panel)
- Insulation: Foam, 2.25 lb density
- Gasketing: Extruded santoprene

Rough opening equals door size.

XT - Series Order Guide

Select options to configure model number. The size chart represents common sizes, but we offer a wide range of additional standard sizes and custom sizes upon request. Contact Nystrom for additional choices.

LATCH	
A	Non-locking handle
D	D-Ring
L	Locking handle (exterior only 1 per door)
T	1/4 Turn latch
P	Padlock
M	Mortise Lock
C	Three-point latch

SERIES	LATCH	WIDTH	X	HEIGHT
XT				

EXAMPLES OF COMMON WIDTH" X LENGTH"			
08 x 08	16 x 16	20 x 30	24 x 30
12 x 12	18 x 18	24 x 24	24 x 36

All access panels are hinged on the height dimension.

FRD: Oversized



Nystrom FRD Series fire-rated, over-sized, double leaf access doors provide access through openings in fire-rated vertical or horizontal surfaces.

The FRD is the industry's only fire rated access panel with sizes available larger than 24" x 36" in horizontal surfaces. The double leaf design has a removable mullion.

- Door: 18-gauge cold rolled steel
- Frame: 16-gauge cold rolled steel
- Hinge: Concealed continuous rod hinge
- Latch: 1/4" Allen head key with automatic panel closer
- Finish: Paintable powder coat
- Insulation: 1-1/2" non-combustible, high temperature

Rough opening is door size + 1/4".

Interior latch release mechanism is standard.



FRD - Series Order Guide

Select options to configure model number.
The size chart represents common sizes, but we offer a wide range of additional standard sizes and custom sizes upon request.
Contact Nystrom for additional choices.

EXAMPLES OF COMMON WIDTH" X LENGTH"			
36 x 48	48 x 36	48 x 48	60 x 48

All access panels are hinged on the height dimension.

SERIES	WIDTH	X	HEIGHT	OPTIONS
FRD				

OPTIONS	
D Double door	C Ceiling application
M Mortise lock prep	W Wall application
S T304 Stainless steel	
T 3-hour rated	

Multiple options may be chosen.

Nystrom LW Lightweight, non-rated, insulated access door offers a solution to larger openings in vertical or horizontal applications available in both pre-finished, embossed, galvanized steel, and aluminum.

- Door: 26-gauge pre-finished embossed galvanized steel
(Optional .063 aluminum panel insert)
- Frame: .045 6063-T5 extruded aluminum
- Hinge: Aluminum continuous piano hinge
- Latch: Screwdriver cam latch
- Finish: White embossed steel
- Flange: Rolled 1-5/16" wide
- Insulation: 3/4" polystyrene with 3.8 R-value at 75°F

Rough opening is door size + 1/4".

LW: All Purpose



LW - Series Order Guide

Select options to configure model number. The size chart represents common sizes, but we offer a wide range of additional standard sizes and custom sizes upon request. Contact Nystrom for additional choices.

LATCH	
T	Screwdriver cam latch
L	Key operated cam latch

SERIES	LATCH	WIDTH	X	HEIGHT	OPTIONS
LW					

EXAMPLES OF COMMON WIDTH" X LENGTH"					
12 x 12	22 x 30	24 x 24	24 x 48	30 x 36	48 x 48*
18 x 18	22 x 36	24 x 36	30 x 30	36 x 36	60 x 48*
					72 x 48*

All access panels are hinged on the height dimension.
*Double door construction.

OPTIONS	
A	Aluminum insert panel
G	Gasketing

FRU: Upward Opening

Nystrom FRU access panels are for those special installation circumstances when the door of the access panel must swing upward or inward. The FRU is available with a Warnock Hersey 2 or 3 hour fire rating.

- Door: 18-gauge cold rolled steel
- Frame: 16-gauge cold rolled steel
- Hinge: Concealed continuous piano
- Latch: 1/4" Allen head key with optional automatic panel closer
- Finish: Paintable powder coat
- Insulation: Non-combustible, high temperature

Rough opening is door size + 1/4".

Interior latch release mechanism is standard.

FIRE RATED



NEW



FRU - Series Order Guide

Select options to configure model number.
The size chart represents common sizes, but we offer a wide range of additional standard sizes and custom sizes upon request.
Contact Nystrom for additional choices.

EXAMPLES OF COMMON WIDTH" X LENGTH"		
24 x 48	30 x 36	32 x 32
30 x 30	30 x 48	36 x 36

All access panels are hinged on the height dimension.

SERIES	WIDTH	X	HEIGHT	OPTIONS
FRU				

- | OPTIONS | |
|----------|-----------------------------|
| B | Bonderized/galvanized steel |
| G | Gasketing |
| M | Mortise lock prep |
| S | T304 Stainless steel |
- Multiple options may be chosen.

Nystrom DTK self closing, self latching access panels provide access through draft stops in attic spaces. They prevent back draft from one section of an attic to another. This standard non-rated access door is self-closing and allows for access from both sides of the door.

- Door: 14-gauge cold rolled steel
- Frame: 16-gauge cold rolled steel
- Hinge: Flush continuous piano
- Latch: Knurled knob/key operated latch bolt
- Finish: Paintable powder coat
- Flange: 1" flange for all surfaces

Rough opening is door size + 1/4".

DTK: Draft Stop



Shown with knurled knob/key operated latch bolt

DTK - Series Order Guide

Select options to configure model number. The size chart represents common sizes, but we offer a wide range of additional standard sizes and custom sizes upon request. Contact Nystrom for additional choices.

EXAMPLES OF COMMON WIDTH" X LENGTH"			
22 x 36	24 x 48	30 x 30	36 x 36
24 x 36	24 x 60	30 x 36	36 x 48

All access panels are hinged on the height dimension.

SERIES DTK	WIDTH	X	HEIGHT	OPTIONS

OPTIONS	
B	Bonderized/galvanized steel
G	Gasketing
S	T304 Stainless steel

Multiple options may be chosen.

PL: Plastic



Nystrom PL plastic access doors provide simple and inexpensive access through a vertical or horizontal surface in residential or light-duty applications. The lightweight design with a removable door is easily installed by applying glue or adhesive to the back of the frame.

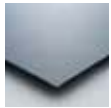
- Door: 1/8" high impact styrene plastic removable door
- Frame: Reversible 3/4" flange frame
- Latch: Snap latches securing door
- Finish: Texturized white finish

PL - Series Order Guide

No additional options available.

STANDARD WIDTH" X LENGTH"		
4 x 6	8 x 8	14 x 29
6 x 9	14 x 14	

SERIES	WIDTH	X	HEIGHT
PL			



B Galvanized Bonderized Steel

With primer coat. Use where a more corrosion resistant material is required.



S Stainless Steel Type #304

With #4 satin polish finish. Use in areas that require the highest level of corrosion resistance. Can also be used in areas where a polished stainless steel look is desired.



D Double Leaf Access Panel

When you need access to large openings, we recommend double leaf panels for easy use.



C Drip Cap on Frame*

Directs running water away from the face of the panel.



G Gasketing

Applied to the doorstops to provide weather resistance and reduces airflow between the panel and frame. Also available with UL listed smoke seal.



H Continuous Piano Hinge

Provides specification compliance when required.



L Louvered Door*

Provides ventilation for special applications.



M Masonry Anchors

Attached to the frame to secure the panel when installed in masonry.



Z Concealed Continuous Piano Hinge

Provides added security while maintaining an appealing appearance.



C Screwdriver Operated Cam Latch*

Most commonly used. For standard applications.



**K Knurled Knob/
Key Operated Latch Bolt**

Patented ball bearing latch bolt operated by a screw-in type knurled knob or flush key. This is the standard latching mechanism on our fire rated models.



L Key Operated Cam Lock*

When locks are required, it provides an economical solution for controlled access.



M Mortise Cylinder Lock Preparation

Provides a high level of security and matches the project hardware. The panel accepts a standard 1.125" mortise cylinder by most lock manufacturers (Best, Corbin, Russwin, Schlage, etc.)



H Hex Head Cam Latch*

Requires a standard allen wrench to open the panel.



P Pinned Hex Head Cam Latch*

For more secure applications – requires a special pinned allen wrench to open the panel.



S Security Screw – Pinned Hex Head*

Highest security without a lock – requires special pinned allen wrench to open the panel.



D Detention Lock Preparation

For heavy-duty detention deadbolt lock. Used in maximum security applications.



B Best 5E Series Cam Lock Prep*

Economical solution to match Best Locking System by preparing to receive a 5E cam lock.



N Knurled Knob Cam Latch*

Unrestricted access – no tool required. Finger operated.

*Not available on fire rated doors or XT, FRD, FRU, PL.

Nystrom reserves the right to withdraw products or make product changes to color or design without notice.

Access Doors



Roof Hatches



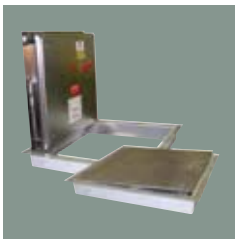
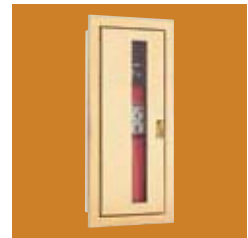
Smoke Vents



Louvers



Fire Cabinets



Floor Hatches



Expansion Joints



Entrance Systems



Stair Nosings



Wall Protection

9300 73rd Av N
Brooklyn Park, MN
55428

TF 800.547.2635
FX 800.317.8770
Nystrom.com



Right to site.